



INTEGRAL AESTHETICS FOR POOLS, TERRACES & INDOORS
ESTÉTICA INTEGRAL PARA PISCINA, TERRAZA E INTERIORES



cements
serie

in & out

news

We introduce you new products for the design of indoor and outdoor spaces. On the other hand we spot the new indoor format bases which are available in most of our series, so we can combine both of our habitats, indoor and outdoor.

Presentamos varias novedades para el diseño de espacios exteriores e interiores. Por otro lado destacamos los nuevos formatos de bases para interior, disponibles en la mayor parte de nuestras series, un nuevo paso con el que conjugar nuestro hábitat exterior e interior.



colours
pool

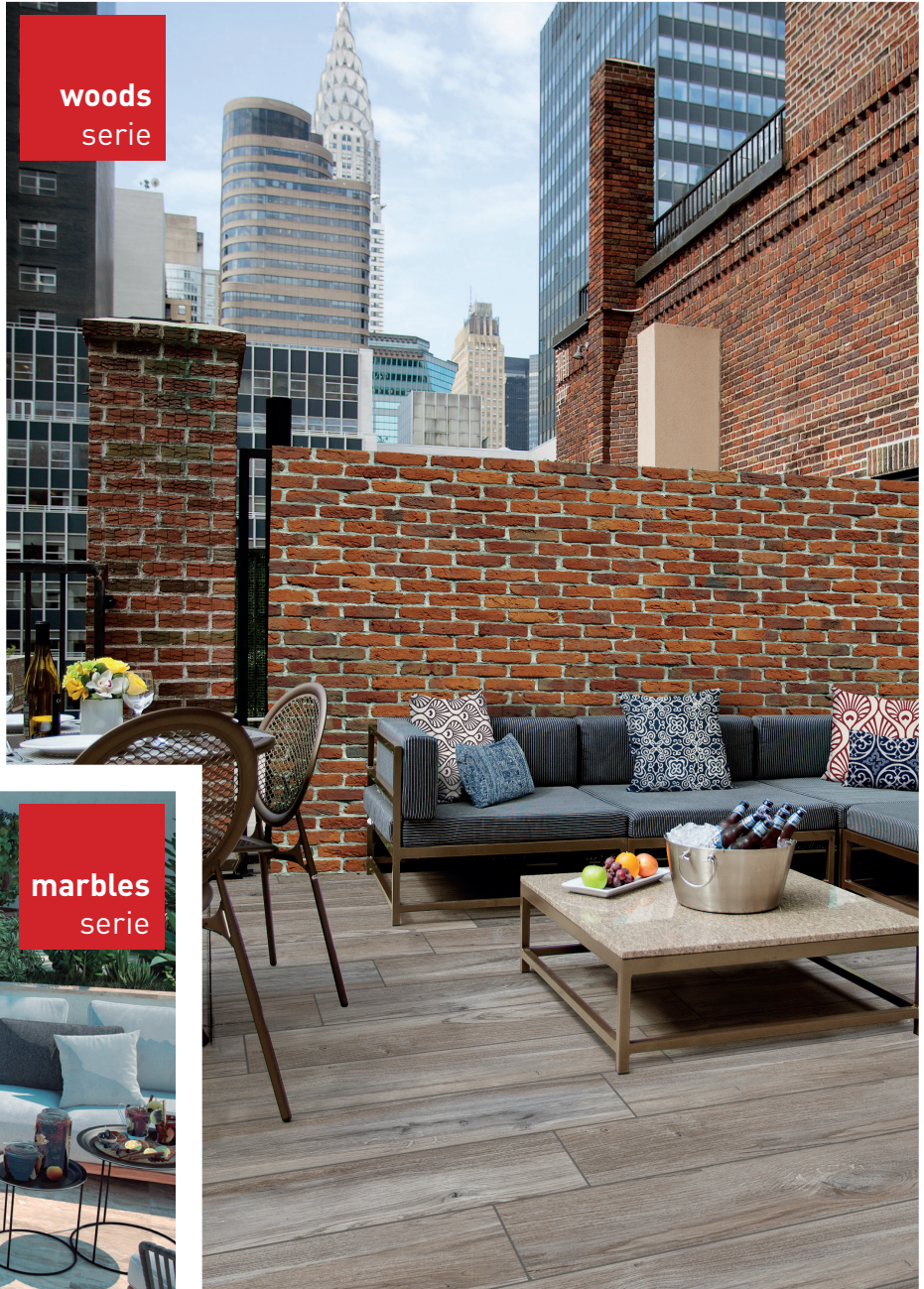


bora
pool



domus
serie

in&out
floor tiles



woods
serie



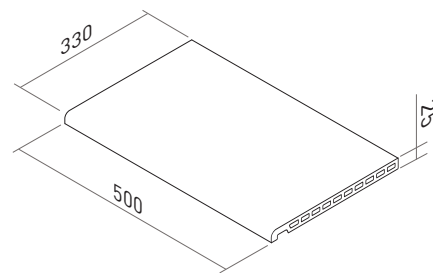
marbles
serie

CRETA SKIMMER COPING SYSTEM

SISTEMA DE CORONACIÓN SKIMMER



CRETA EDGE
BORDE CRETA
Ref. BPCR 0000 33x50 **(M-754) pz**
MONOBLOCK



CERAMIC GRATE
REJILLA CERÁMICA
Ref. RJ66 0000 25x50 **(M-747) pz**
MONOBLOCK

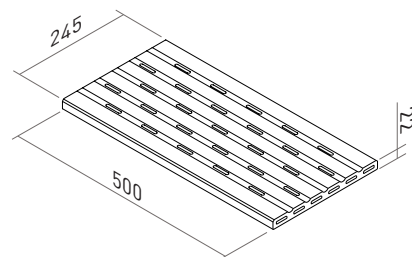


Breaking Load
Fuerza de rotura
>3500N

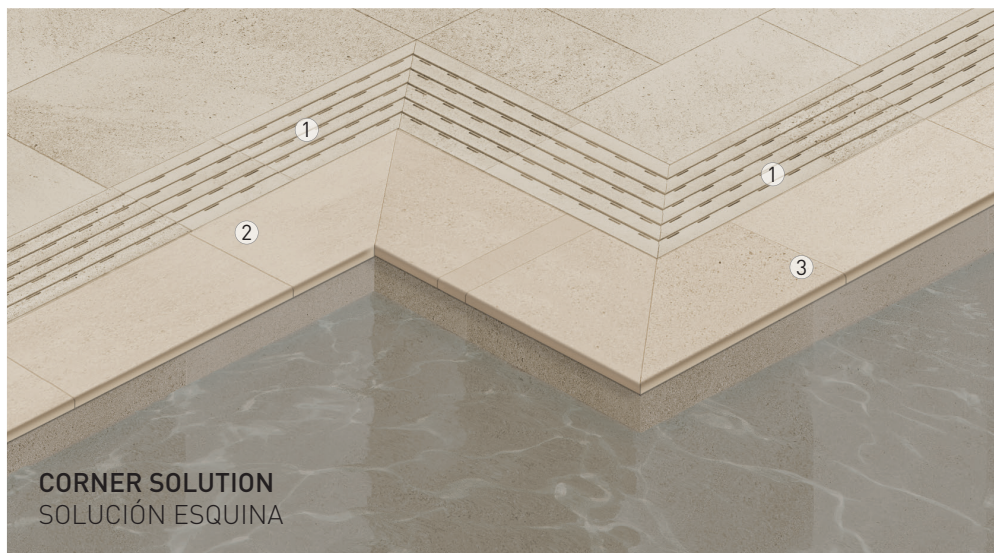
EN ISO 10545-4



Drain
Desagüe
> 19.7 m³/hora



Grate Rubber
Goma p/Rejilla
Art. 6491 **(M-250) ml**



CORNER SOLUTION
SOLUCIÓN ESQUINA

CERAMIC GRATE CORNER PACK
PACK ESQUINA REJILLA CERÁMICA

① Ref. RJ66 E000 25x50 **(M-749) 2pz**

*Grates RJ55, RJ70 and RJ88 can also be used
Compatible con las rejillas RJ55, RJ70 y RJ88*

CRETA EDGE CORNER PACK
PACK ESQUINA BORDE CRETA

② Ref. BPCR E100 33x50 **(M-755) 2pz**

③ Ref. BPCR EE00 33x50 **(M-755) 2pz**

TECHNICAL INFORMATION

INFORMACIÓN TÉCNICA

MONOBLOCK ONE PIECE WITHOUT GLUED
UNA PIEZA, SIN PEGADO



UNE ENV 12633
Clase 3



DIN 51130
R10



DIN 51097
Clase C



EN ISO 10545-12
✓



EN ISO 10545-13
GA / GLA / GHA



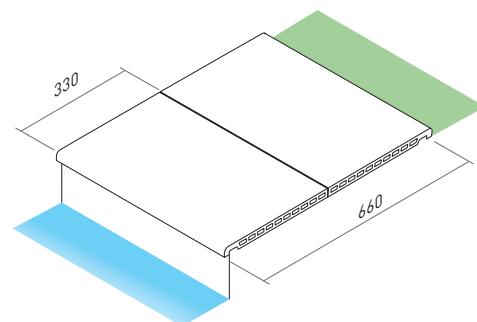
LONG LIFE
LARGA VIDA



EASY
FÁCIL

WIDER EXTRA EDGE SOLUTION

SOLUCIÓN PARA UN BORDE MÁS ANCHO





CURVE CERAMIC GRATE
REJILLA CERÁMICA CURVA

- ① Ref. RJ66 RI00 **(M-757) pz**
- ③ Ref. RJ66 RE00 **(M-757) pz**

CRETA CURVE EDGE
BORDE CURVO CRETA

- ② Ref. BPCR RI00 33x50 **(M-756) pz**
 - ④ Ref. BPCR RE00 33x50 **(M-756) pz**
- Curved grate RJ88 RI01 can also be used
Compatible con las rejilla curva RJ88 RI01*

CURVED SOLUTION
SOLUCIÓN CURVA



Woods Arctic



Woods Nordic



Stromboli Light



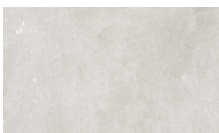
Stromboli Cream



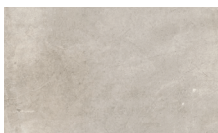
Stromboli Silver



Sea Rock Marfil



Cements Snow



Cements Smoke



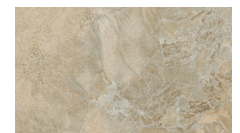
Cements Warm



Rainforest Blanco



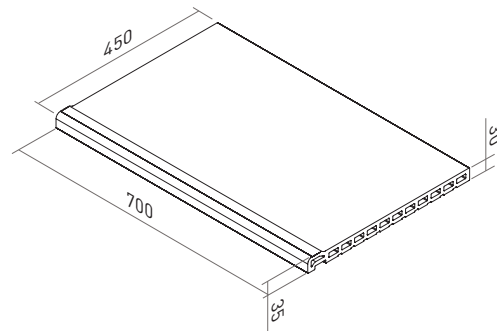
Rainforest Musgo



Sea Rock Caramel

MIKONOS SKIMMER COPING SYSTEM

SISTEMA DE CORONACIÓN SKIMMER



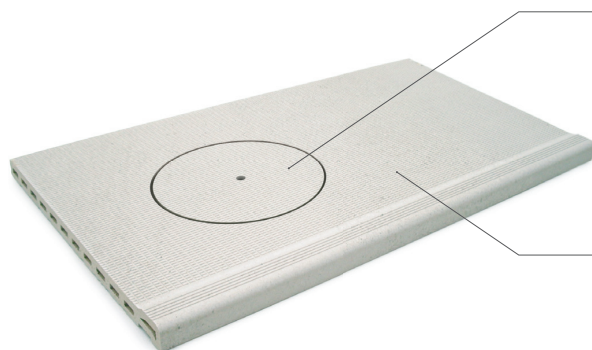
MIKONOS EDGE
BORDE MIKONOS
Ref. BPMI 0000 E2C 45x70 **(M-517) pz**
MONOBLOCK

R12 Super antislip
Súper antideslizante

-30% of thermal feeling
de sensación térmica



Special pieces for skimmer
Piezas especiales para skimmer



COVER FOR SKIMMER HOLE
TAPA PARA AGUJERO SKIMMER
Ref. BPMI SKTP **(M-530) pz**
MONOBLOCK

SPECIAL PIECE WITH HOLE FOR SKIMMER
PIEZA ESPECIAL CON AGUJERO PARA SKIMMER
Ref. BPMI SK00 E2C 45x70 **(M-530) pz**
MONOBLOCK



Ⓐ CORNER SOLUTION
SOLUCIÓN ESQUINA
Ref. BPMI E100 E2C 45x70 **(M-567) 2pz**

Ⓑ CORNER SOLUTION
SOLUCIÓN ESQUINA
Ref. BPMI EE00 E2C 45x70 **(M-567) 2pz**

CORNER SOLUTION
SOLUCIÓN ESQUINA

TECHNICAL INFORMATION

INFORMACIÓN TÉCNICA

MONOBLOCK ONE PIECE WITHOUT GLUED
UNA PIEZA, SIN PEGADO



UNE ENV 12633
Clase 3



DIN 51130
R12



DIN 51097
Clase C



EN ISO 10545-12
✓



EN ISO 10545-13
GA / GLA / GHA



LONG LIFE
LARGA VIDA



EASY
FÁCIL



STROMBOLI_light



Ⓐ **MIKONOS CURVED POOL EDGE**
BORDE CURVO MIKONOS
Ref. BPMI RI00 E2C 45x- **(M-737) pz**

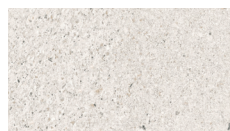
Ⓑ **MIKONOS CURVED POOL EDGE**
BORDE CURVO MIKONOS
Ref. BPMI RE00 E2C 45x- **(M-737) pz**



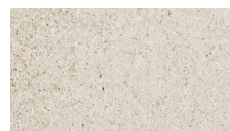
Rainforest Blanco



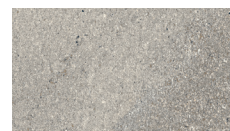
Rainforest Musgo



Stromboli Light



Stromboli Cream



Stromboli Silver



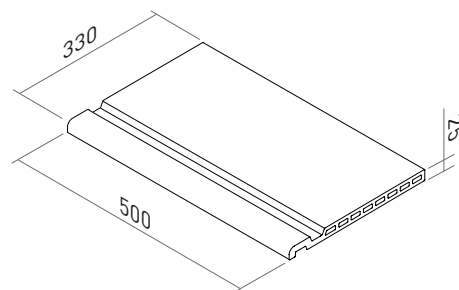
Sea Rock Caramel

MAUI OVERFLOWING COPING SYSTEM

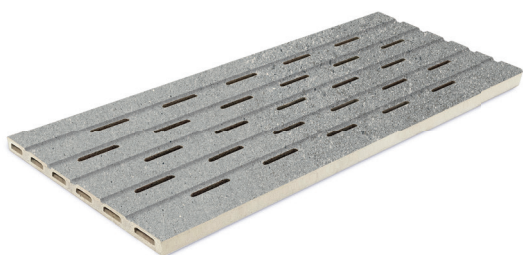
SISTEMA DE CORONACIÓN DESBORDANTE



MAUI EDGE
BORDE MAUI
Ref. BPMA 0000 33x50 **(M-746) pz**
MONOBLOCK



CERAMIC GRATE
REJILLA CERÁMICA
Ref. RJ66 0000 25x50 **(M-747) pz**
MONOBLOCK



Breaking Load
Fuerza de rotura

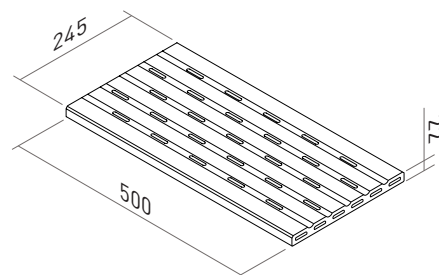
EN ISO 10545-4

>3500N

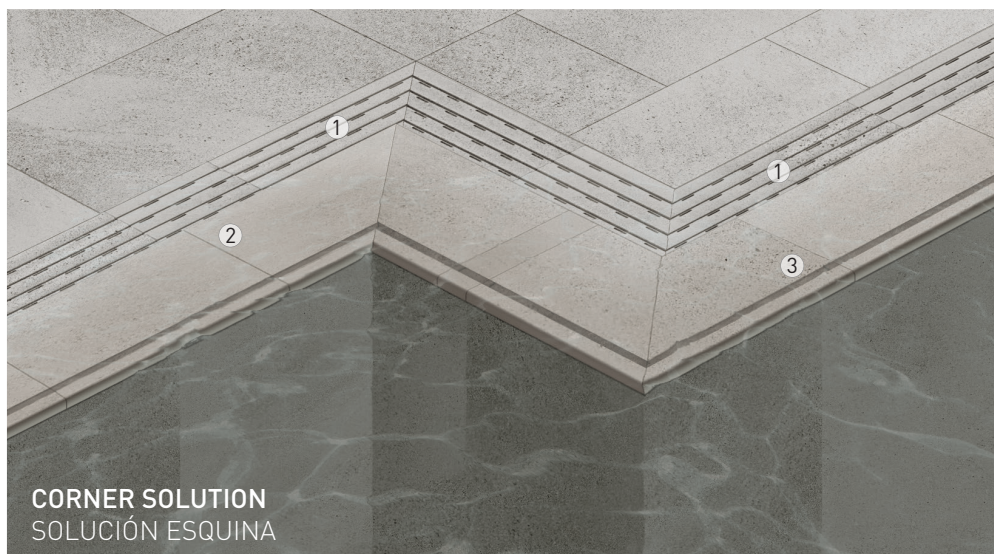


Drain
Desagüe

> 19.7 m³/hora



Grate Rubber
Goma p/Rejilla
Art. 6491 **(M-250) ml**



CORNER SOLUTION
SOLUCIÓN ESQUINA

CERAMIC GRATE CORNER PACK
PACK ESQUINA REJILLA CERÁMICA

① Ref. RJ66 E000 25x50 **(M-749) 2pz**

*Grates RJ55, RJ70 and RJ88 can also be used
Compatible con las rejillas RJ55, RJ70 y RJ88*

MAUI EDGE CORNER PACK
PACK ESQUINA BORDE MAUI

② Ref. BPMA EI00 33x50 **(M-748) 2pz**

③ Ref. BPMA EE00 33x50 **(M-748) 2pz**

TECHNICAL INFORMATION

INFORMACIÓN TÉCNICA

MONOBLOCK ONE PIECE WITHOUT GLUED
UNA PIEZA, SIN PEGADO



UNE ENV 12633
Clase 3



DIN 51130
R10



DIN 51097
Clase C



EN ISO 10545-12
✓



EN ISO 10545-13
GA / GLA / GHA



NOISELESS
SILENCIOSO



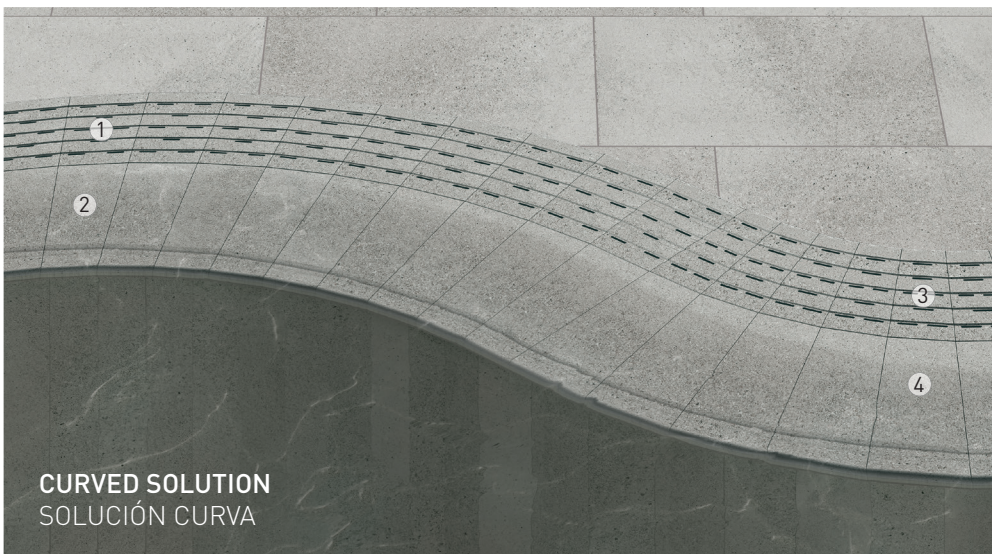
LONG LIFE
LARGA VIDA



EASY
FÁCIL



STROMBOLI_light



CURVED SOLUTION
SOLUCIÓN CURVA

CURVE CERAMIC GRATE
REJILLA CERÁMICA CURVA

- ① Ref. RJ66 RI00 **(M-757) pz**
- ③ Ref. RJ66 RE00 **(M-757) pz**

MAUI CURVE EDGE
BORDE CURVO MAUI

- ② Ref. BPMA RI00 33x50 **(M-775) pz**
- ④ Ref. BPMA RE00 33x50 **(M-775) pz**

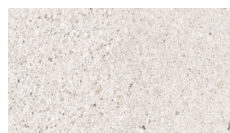
*Curved grate RJ88 RI01 can also be used
Compatible con las rejilla curva RJ88 RI01*



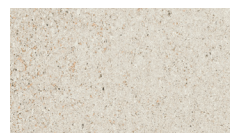
Rainforest Blanco



Rainforest Musgo



Stromboli Light



Stromboli Cream



Stromboli Silver



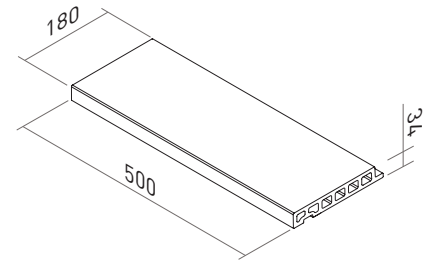
Sea Rock Caramel

CANARIAS

OVERFLOWING COPING SYSTEM SISTEMA DE CORONACIÓN DESBORDANTE



CANARIAS EDGE
BORDE CANARIAS
Ref. BSCA 0000 18x50 **(M-729) pz**
MONOBLOCK



CERAMIC GRATE
REJILLA CERÁMICA
Ref. RJ70 0000 20x50 **(M-731) pz**
MONOBLOCK



Breaking Load
Fuerza de rotura

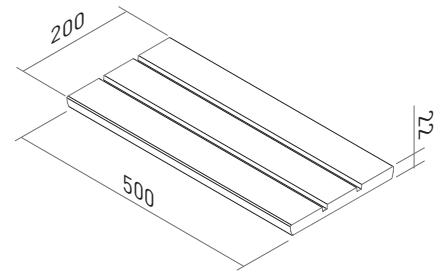
EN ISO 10545-4

>4000N



Drain
Desagüe

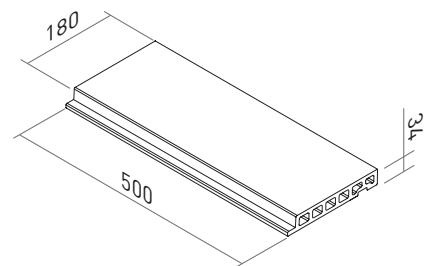
> 9.7 m³/hora



Grate Rubber
Goma p/Rejilla
Art. 6491 **(M-250) ml**



GRATE SUPPORT
SOPORTE P/REJILLA
Ref. BSCA 0000 18x50 **(M-729) pz**
MONOBLOCK



CORNER SOLUTION
SOLUCIÓN ESQUINA

CANARIAS CORNER GRATE SUPPORT
SOPORTE ESQUINA CANARIAS P/REJILLA

① Ref. BSCA EE00 18x50 **(M-733) 2 pz**

④ Ref. BSCA EI00 18x50 **(M-733) 2 pz**

CORNER CERAMIC GRATE
ESQUINA REJILLA CERÁMICA

② Ref. RJ70 E000 20x20 **(M-732) pz**

*Grates RJ55, RJ66 and RJ88 can also be used
Compatible con las rejillas RJ55, RJ66 y RJ88*

CANARIAS CORNER EDGE
BORDE ESQUINA CANARIAS

③ Ref. BSCA EI00 18x50 **(M-733) 2 pz**

⑤ Ref. BSCA EE00 18x50 **(M-733) 2 pz**

TECHNICAL INFORMATION INFORMACIÓN TÉCNICA

MONOBLOCK ONE PIECE WITHOUT GLUED
UNA PIEZA, SIN PEGADO



UNE ENV 12633
Clase 3



DIN 51130
R10



DIN 51097
Clase C



EN ISO 10545-12
✓



EN ISO 10545-13
GA / GLA / GHA



NOISELESS
SILENCIOSO



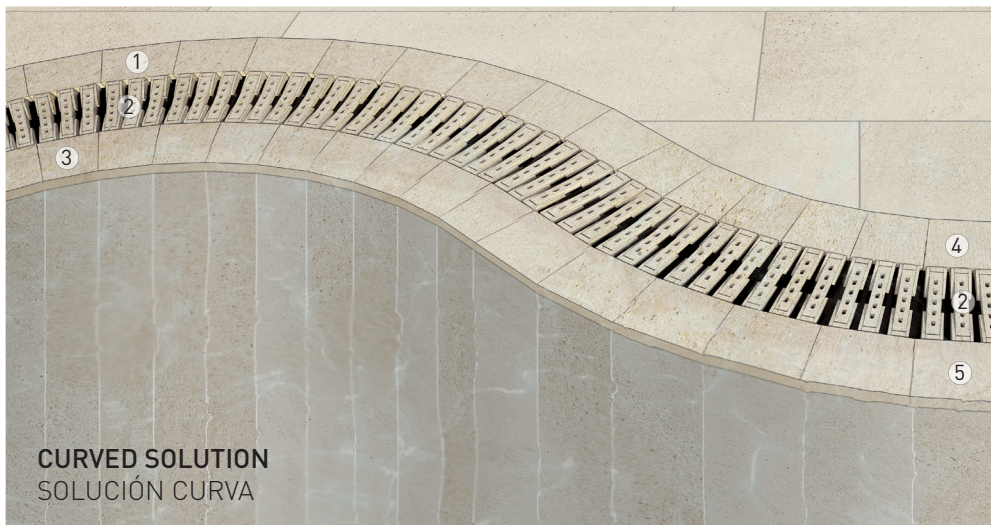
LONG LIFE
LARGA VIDA



EASY
FÁCIL



STROMBOLI_silver




CURVED SOLUTION
SOLUCIÓN CURVA

CURVED GRATE SUPPORT
SOPORTE P/REJILLA CURVA

- ① Ref. BSCA RE00 (M-745) pz
- ④ Ref. BSCA RI00 (M-745) pz

CURVE GRATE **FLEXIBLE**
REJILLA CURVA

- ② Ref. RJ88 RI01 25 (M-583) 11 pz

 Grate bolts / included
Pernos rejilla / incluidos
Art. 6493 (M-704) 25 pz

CANARIAS CURVED EDGE
BORDE CANARIAS CURVO

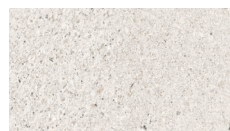
- ③ Ref. BSCA RI00 (M-745) pz
- ⑤ Ref. BSCA RE00 (M-745) pz



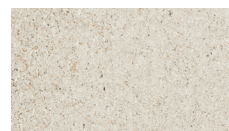
Rainforest Blanco



Rainforest Musgo



Stromboli Light



Stromboli Cream



Stromboli Silver

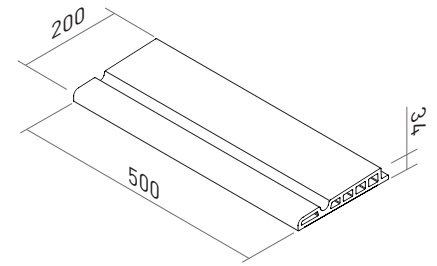


Sea Rock Caramel



BORA EDGE
BORDE BORA
Ref. BPBO 0000 20x50 **(M-758) pz**
MONOBLOCK

OVERFLOWING >>3,2%



CERAMIC GRATE
REJILLA CERÁMICA
Ref. RJ55 0000 20x50 **(M-759) pz**
MONOBLOCK

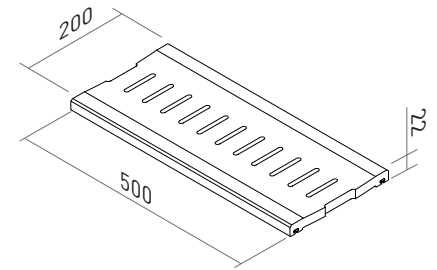


Breaking Load
Fuerza de rotura
EN ISO 10545-4
>4000N



Drain
Desagüe
> 19.4 m³/hora

ANTISHOCK

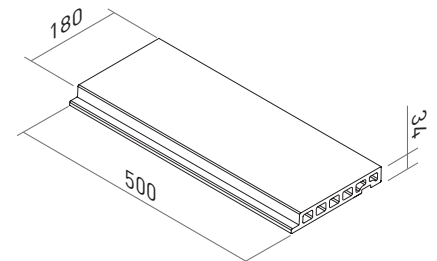


Worldwide Patent
Patente Mundial

Grate Rubber included
Goma p/Rejilla incluida
Art. 7966 **(M-771) ml**



GRATE SUPPORT
SOPORTE P/REJILLA
Ref. BSCA 0000 18x50 **(M-729) pz**
MONOBLOCK



CORNER SOLUTION
SOLUCIÓN ESQUINA

CORNER GRATE SUPPORT
SOPORTE ESQUINA P/REJILLA

- ① Ref. BSCA EE00 18x50 **(M-733) 2 pz**
- ④ Ref. BSCA EI00 18x50 **(M-733) 2 pz**

CORNER CERAMIC GRATE
ESQUINA REJILLA CERÁMICA

- ② Ref. RJ55 E000 20x_ **(M-766) pz**
- ANTISHOCK**

*Grates RJ66, RJ70 and RJ88 can also be used
Compatible con las rejillas RJ66, RJ70 y RJ88*

BORA CORNER EDGE
BORDE ESQUINA BORA

- ③ BPBO EI00 20x_ **(M-765) 2 pz**
- ⑤ BPBO EE00 20x_ **(M-765) 2 pz**

TECHNICAL INFORMATION
INFORMACIÓN TÉCNICA

MONOBLOCK ONE PIECE WITHOUT GLUED
UNA PIEZA, SIN PEGADO



UNE ENV 12633
Clase 3



DIN 51130
R10



DIN 51097
Clase C



EN ISO 10545-12
✓



EN ISO 10545-13
GA / GLA / GHA



NOISELESS
SILENCIOSO



LONG LIFE
LARGA VIDA



EASY
FÁCIL

**NEW
SYSTEM**



STROMBOLI_light



CURVED SOLUTION
SOLUCIÓN CURVA

CURVED GRATE SUPPORT
SOPORTE P/REJILLA CURVA

- ① Ref. BSCA RE00 (M-745) pz
- ④ Ref. BSCA RI00 (M-745) pz

CURVED CERAMIC GRATE
REJILLA CERÁMICA CURVA

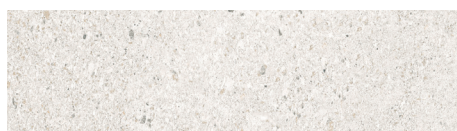
- ② Ref. RJ55 R000 20x_ (M-778) pz

ANTISHOCK

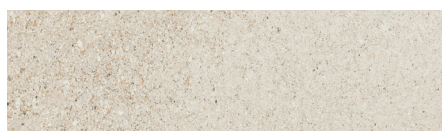
*Grates RJ66, RJ70 and RJ88 can also be used
Compatible con las rejillas RJ66, RJ70 y RJ88*

BORA CURVED EDGE
BORDE CURVO BORA

- ③ Ref. BPBO RI00 20x_ (M-767) 2 pzs
- ⑤ Ref. BPBO RE00 20x_ (M-767) 2 pzs



Stromboli Light



Stromboli Cream



Stromboli Silver

HAWAII

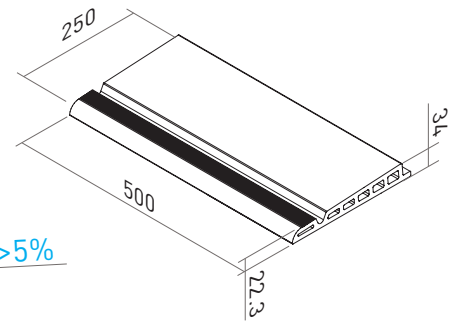
OVERFLOWING COPING SYSTEM SISTEMA DE CORONACIÓN DESBORDANTE



HAWAII EDGE
BORDE HAWAII
Ref. BPHA 0000 25x50 **(M-709) pz**
MONOBLOCK

R12 **-30%**

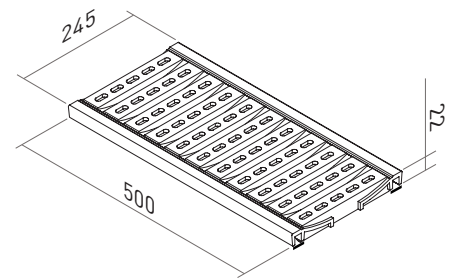
OVERFLOWING **>>5%**



CERAMIC GRATE
REJILLA CERÁMICA
Ref. RJ88 0000 25x50 **(M-516) pz**
MONOBLOCK

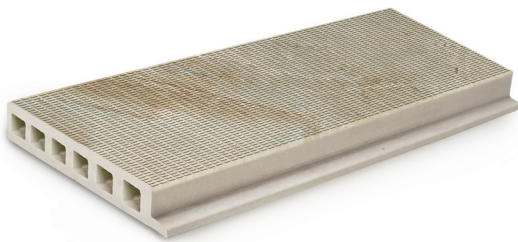
Breaking Load
Fuerza de rotura **>3500N** | EN ISO 10545-4

Drain
Desagüe **> 57 m³/hora**



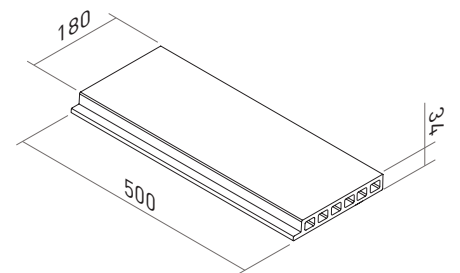
Worldwide Patent
Patente Mundial

Grate Rubber
Goma p/Rejilla
Art. 6491 **(M-250) ml**



HAWAII GRATE SUPPORT
SOPORTE HAWAII P/REJILLA
Ref. SRHA 0000 18x50 **(M-716) pz**
MONOBLOCK

R12 **-30%**



CORNER SOLUTION SOLUCIÓN ESQUINA



HAWAII GRATE SUPPORT PACK PACK SOPORTE HAWAII P/REJILLA

- ① Ref. SRHA EE00 18x50 **(M-520) 2pz**
- ④ Ref. SRHA EI00 18x50 **(M-520) 2pz**

CORNER GRATE ESQUINA REJILLA

- ② Ref. RJ88 E000 25 **(M-719) pz**
MONOBLOCK

*Grates RJ55, RJ66 and RJ70 can also be used
Compatible con las rejillas RJ55, RJ66 y RJ70*

HAWAII EDGE PACK PACK BORDE HAWAII

- ③ Ref. BPHA EI00 25x50 **(M-734) 2pz**
- ⑤ Ref. BPHA EE00 25x50 **(M-734) 2pz**

TECHNICAL INFORMATION INFORMACIÓN TÉCNICA

MONOBLOCK ONE PIECE WITHOUT GLUED
UNA PIEZA, SIN PEGADO



UNE EN 12633
Clase 3



DIN 51130
R12



DIN 51097
Clase C



EN ISO 10545-12



EN ISO 10545-13
GA / GLA / GHA



NOISELESS
SILENCIOSO



LONG LIFE
LARGA VIDA



EASY
FÁCIL



SEA ROCK_caramel



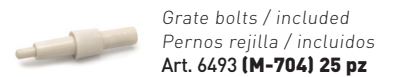
CURVED SOLUTION
SOLUCIÓN CURVA

HAWAII GRATE CURVE SUPPORT
SOPORTE HAWAII P/REJILLA CURVA

- ① Ref. SRHA RI00 **(M-717) pz**
- ④ Ref. SRHA RE00 **(M-717) pz**

CURVE GRATE FLEXIBLE
REJILLA CURVA

- ② Ref. RJ88 RI01 25 **(M-583) 11 pz**



HAWAII CURVE EDGE
BORDE CURVO HAWAII

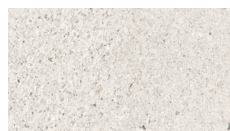
- ③ Ref. BPHA RI00 **(M-414) pz**
- ⑤ Ref. BPHA RE00 **(M-414) pz**



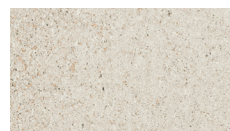
Rainforest Blanco



Rainforest Musgo



Stromboli Light



Stromboli Cream



Stromboli Silver



Sea Rock Caramel

SILL & STEP

VIERTEAGUAS Y PELDAÑO

OVERFLOWING & SKIMMER COPING SYSTEMS

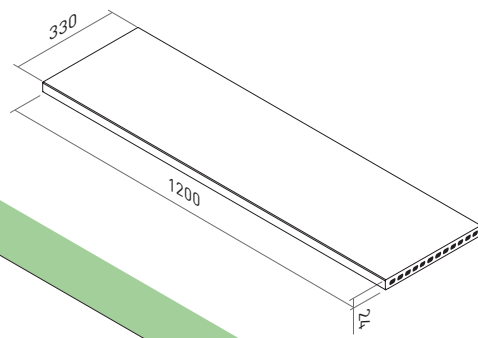
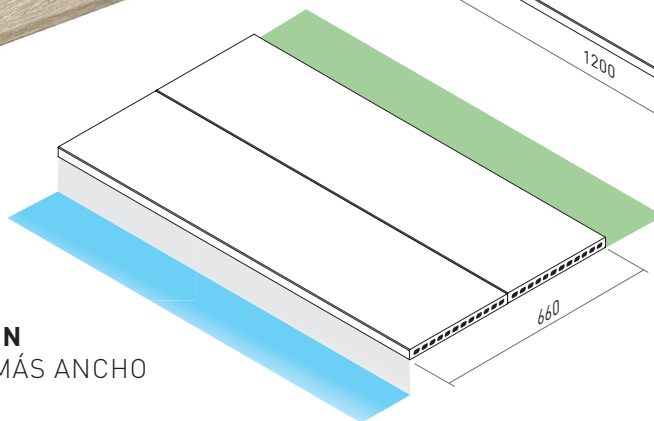
SISTEMAS DE CORONACIÓN DESBORDANTES Y SKIMMER

STEP COPING

CORONACIÓN CON PELDAÑO



Complete step
Peldaño completo
MONOBLOCK
120x33 (M-419) pz



WIDER EXTRA EDGE SOLUTION

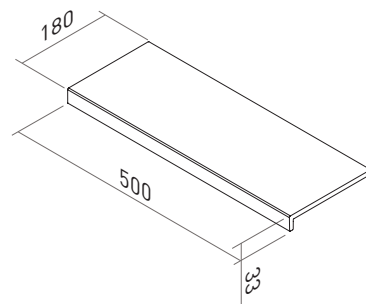
SOLUCIÓN PARA UN BORDE MÁS ANCHO

SILL COPING

CORONACIÓN CON VIERTAGUAS



Sill
Vierteaguas
MONOBLOCK
18x50 cm (M-392) pz



TECHNICAL INFORMATION

INFORMACIÓN TÉCNICA

MONOBLOCK ONE PIECE WITHOUT GLUED
UNA PIEZA, SIN PEGADO



UNE ENV 12633
Clase 3



DIN 51130
R10



DIN 51097
Clase C



EN ISO 10545-12
✓



EN ISO 10545-13
GA / GLA / GHA



NOISELESS
SILENCIOSO



LONG LIFE
LARGA VIDA



EASY
FÁCIL

CERAMIC GRATES REJILLAS CERÁMICAS

INTELLIGENT POOL SYSTEMS. Intelligent systems can be combined between them to find the best solution for all pool types.

SISTEMAS INTELIGENTES PARA PISCINAS. Sistemas inteligentes, combinables entre si para encontrar la mejor solución a todo tipo de piscinas.

EDGES BORDES



MIKONOS 45 x 70 cm



CRETA 33 x 50 cm



MAUI 33 x 50 cm



CANARIAS 18 x 50 cm



BORA 20 x 50 cm



HAWAII 25 x 50 cm



CERAMIC GRATES REJILLAS CERÁMICAS



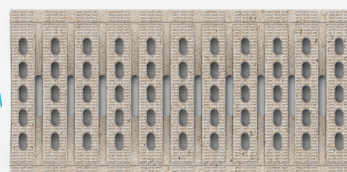
RJ55 20 x 50 cm **new** ANTISHOCK



RJ66 25 x 50 cm



RJ70 20 x 50 cm



RJ88 25 x 50 cm



GRATE SUPPORTS SOPORTES P/REJILLA



BSCA 18 x 50 cm



SRHA 18 x 50 cm



WOODS

in&out
floor tiles

pool
solutions

WALL AND FLOOR TILES / WOOD
REVESTIMIENTO & PAVIMENTO / MADERA

Aesthetic classification and shade variations
Clasificación estética y destonificación

60%



WOODS_nordic



ARCTIC  CRETA EDGE
RJ66 GRATE



NORDIC  CRETA EDGE
RJ66 GRATE



OLIVO

FORMATS FORMATOS



20x120^RIN Base
(M-761) m²



22,5x90* OUT Base
(M-760) m²



9x45 Rodapié
(M-744) pz

(*) Tiles without rectify - Bases sin rectificar | (R) Rectified tiles - Bases rectificadas

STEP PELDAÑO



120x33 Peldaño completo
MONOBLOCK 
(M-419) pz



9x45 Zanquín completo
(Dcha. /Izq.)
(M-750) 2 pzs

TILES

STEPS

STROMBOLI

in&out
floor tiles

pool
solutions

WALL AND FLOOR TILES / STONE
REVESTIMIENTO & PAVIMENTO / PIEDRA

Aesthetic classification and shade variations
Clasificación estética y destonificación

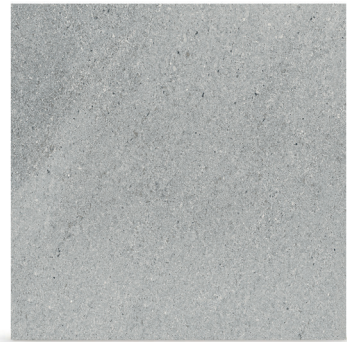
60% 



LIGHT 



CREAM 



SILVER 



STROMBOLI_light

FORMATS
FORMATOS

TILES




31x83* OUT Base 
(M-741) m²



37,5x75^R OUT Base 
(M-770) m²



75x75^R IN Base 
(M-768) m²

75x75^R OUT Base 
(M-769) m²

(*) Tiles without rectify - Bases sin rectificar | (R) Rectified tiles - Bases rectificadas

STEP
PELDAÑO

STEPS AND SPECIAL PIECES



31,6x33 Peldaño recto
MONOBLOCK 
(M-707) pz



33x33 Peldaño angular recto
MONOBLOCK 
(M-715) pz



9x45 Zanquín recto
(Dcha. /Izq.)
(M-743) 2 pzs



9x45 Zanquín completo
(Dcha. /Izq.)
(M-750) 2 pzs



120x33 Peldaño recto
MONOBLOCK 
(M-739) pz



120x33 Peldaño completo
MONOBLOCK 
(M-419) pz

OTHER FINISHES
OTROS ACABADOS

FINISHES



9x45 Rodapié
(M-744) pz



18x50 Vierteaguas
MONOBLOCK
(M-392) pz



13,5x120 Tabica
(M-390) pz

Sea Rock

out
floor tiles

pool
solutions

Aesthetic classification and shade variations
Clasificación estética y destonificación

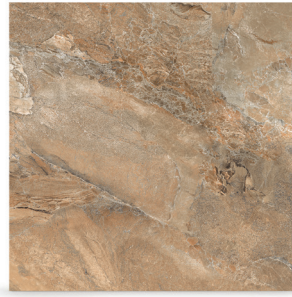
80% 



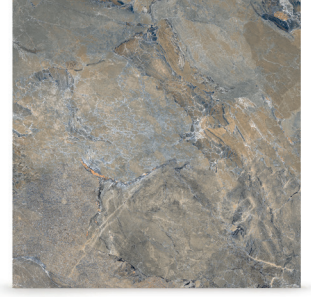
MARFIL



CAMEL



TOFFEE



GRIS OSCURO



SEA RÖCK_caramel

FORMATS FORMATOS



31,6x31,6* OUT
(M-494) m²



31x83* OUT Base
(M-741) m²

MARFIL
CAMEL



45x75* OUT Base
(M-711) m²

MARFIL
CAMEL

(*) Tiles without rectify - Bases sin rectificar | (R) Rectified tiles - Bases rectificadas

STEP PELDAÑO



31,6x33 Peldaño recto
MONOBLOCK
(M-707) pz



33x33 Peldaño angular recto
MONOBLOCK
(M-715) pz



9x45 Zanquín recto
(Dcha. /Izq.)
(M-743) 2 pzs



31,6x33 Peldaño florentino
MONOBLOCK
(M-382) pz



33x33 Peldaño angular florentino
MONOBLOCK
(M-714) pz



9x45 Zanquín florentino
(Dcha. /Izq.)
(M-751) 2 pzs



120x33 Peldaño florentino
MONOBLOCK
(M-742) pz



120x33 Peldaño completo
MONOBLOCK
(M-419) pz



9x45 Zanquín completo
(Dcha. /Izq.)
(M-750) 2 pzs

OTHER FINISHES OTROS ACABADOS



9x45 Rodapié
(M-744) pz



18x50 Vierteaguas
MONOBLOCK
(M-392) pz



13,5x120 Tabica
(M-390) pz

Cements

in&out
floor tiles

pool
solutions

WALL AND FLOOR TILES / CEMENT
REVESTIMIENTO & PAVIMENTO / CEMENTO

Aesthetic classification and shade variations
Clasificación estética y destonificación

40% 



CEMENTS_snow



SNOW  CRETA EDGE
RJ66 GRATE



WARM  CRETA EDGE
RJ66 GRATE



SMOKE  CRETA EDGE
RJ66 GRATE

FORMATS
FORMATOS

TILES



75x75^R IN Base 
(M-768) m²

75x75^R OUT Base 
(M-769) m²

[^R] Rectified tiles - Bases rectificadas

OTHER FINISHES
OTROS ACABADOS

FINISHES



9x45 Rodapié
(M-744) pz

STEP
PELDAÑO

STEPS



120x33 Peldaño recto
MONOBLOCK 
(M-739) pz



9x45 Zanquín completo
(Dcha. /Izq.)
(M-750) 2 pzs

RAINFOREST

out
floor tiles

pool
solutions

WALL AND FLOOR TILES / WOOD
REVESTIMIENTO & PAVIMENTO / MADERA

Aesthetic classification and shade variations
Clasificación estética y destonificación

60% 



BLANCO 



MUSGO 



RAINFOREST musgo

FORMATS FORMATOS

TILES



20x83* OUT Base
(M-740) m²



(*) Tiles without rectify - Bases sin rectificar

STEP PELDAÑO

STEPS AND SPECIAL PIECES



31,6x33 Peldaño recto
MONOBLOCK
(M-707) pz 



33x33 Peldaño angular recto (Dcha. /Izq.)
MONOBLOCK
(M-715) pz 



9x45 Zanquín recto
(Dcha. /Izq.)
(M-743) 2 pzs



120x33 Peldaño completo
MONOBLOCK
(M-419) pz 



9x45 Zanquín completo
(Dcha. /Izq.)
(M-750) 2 pzs

OTHER FINISHES OTROS ACABADOS

FINISHES



9x45 Rodapié
(M-744) pz



18x50 Vierendeaguas
MONOBLOCK
(M-392) pz



13,5x120 Tabica
(M-390) pz

MARBLES

WALL AND FLOOR TILES / MARBLE
REVESTIMIENTO & PAVIMENTO / MÁRMOL

Aesthetic classification and shade variations
Clasificación estética y destonificación

80%



out
floor tiles



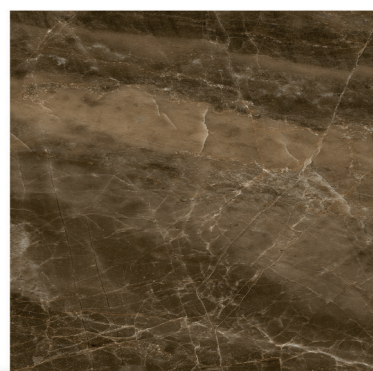
MARBLES_almond



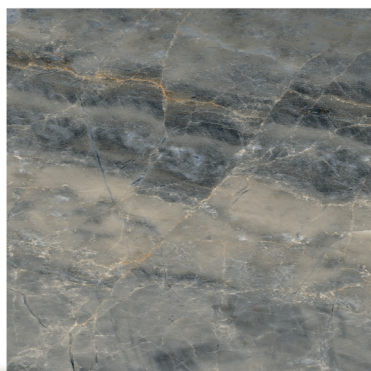
OYSTER



ALMOND



CHESTNUT



DOVE

FORMATS
FORMATOS

TILES



33x33* OUT Base
(M-772) m²



(* Tiles without rectify - Bases sin rectificar

OTHER FINISHES
OTROS ACABADOS

FINISHES



9x45 Rodapié
(M-744) pz

STEP
PELDAÑO

STEPS AND SPECIAL PIECES



33x33 Peldaño florentino
MONOBLOCK
(M-777) pz



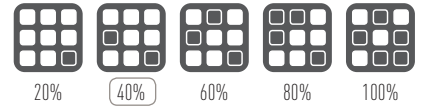
9x45 Zanquín florentino
(Dcha. /Izq.)
(M-751) 2 pzs

DOMUS

out
floor tiles

FLOOR TILES AND WALL / ANTI-SLIP / CEMENT
PAVIMENTO Y REVESTIMIENTO / ANTIDESLIZANTE / CEMENTO

Aesthetic classification and shade variations
Clasificación estética y destonificación



DOMUS_fog



RICE



WHEAT



FOG

FORMATS
FORMATOS

TILES



33x33* OUT Base
(M-772) m²



(*) Rectified tiles - Bases rectificadas

STEP
PELDAÑO

STEPS AND SPECIAL PIECES



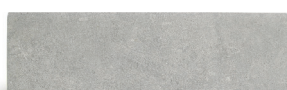
33x33 Peldaño recto
MONOBLOCK (M-776) pz



9x45 Zanquín recto
(Dcha. /Izq.)
(M-743) 2 pzs

OTHER FINISHES
OTROS ACABADOS

FINISHES



9x45 Rodapié
(M-744) pz



18x50 Vierendeague
MONOBLOCK (M-392) pz

MATERIA / Colonial

FLOOR TILES AND WALL / ANTI-SLIP / RUSTIC
PAVIMENTO Y REVESTIMIENTO / ANTIDESLIZANTE / RÚSTICO

Aesthetic classification and shade variations
Clasificación estética y destonificación

40%



out
floor tiles



MATERIA_plomo



COLONIAL_cotto



Serie Materia / BIANCO



Serie Materia / ARENA



Serie Materia / PLOMO



Serie Colonial / COTTO

FORMATS FORMATOS

TILES



31,6x31,6* OUT Base
(M-494) m²



[*] Tiles without rectify - Bases sin rectificar

STEP PELDAÑO

STEPS AND SPECIAL PIECES



31,6x33 Peldaño recto
MONOBLOCK
(M-707) pz



9x30 Zanquín recto
(Dcha. /Izq.)
(M-706) 2 pzs

OTHER FINISHES OTROS ACABADOS

FINISHES



9x31,6 Rodapié
(M-180) pz



18x31,6 Vierendeague
MONOBLOCK
(M-702) pz

PACKING LIST V.1 | 2018

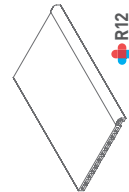
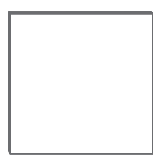
DATE: 15/02/2018



FLOOR TILES

EDGES / BORDES

	Price	Inches	pieces/box	SQM/box	m ² /caja	box/pallet	cajas/pallet	pieces/pallet	SQM/pallet	m ² /pallet	Kg/box	Kg/pallet gross
BASE 31,6x31,6* cm - OUT	[M-494] m ²	12.4"x12.4"	10	1,0000	60	600	60,00	1,292				
BASE 33x33* cm - OUT	[M-772] m ²	12.9"x12.9"	12	1,3300	44	528	58,52	1,150				
BASE 37,5x75 ^R cm - OUT	[M-770] m ²	14.8x29.5"	4	1,1250	48	192	54,00	1,244				
BASE 20x83* cm - OUT	[M-740] m ²	7.8"x32.6"	6	1,0000	64	384	64,00	1,414				
BASE 31x83* cm - OUT	[M-741] m ²	12.2"x32.6"	4	1,0292	50	250	51,46	1,135				
BASE 45x75 ^R cm - OUT	[M-711] m ²	17.7"x29.5"	3	1,0125	56	168	56,70	1,445				
BASE 75x75 ^R cm - OUT	[M-769] m ²	29.5"x29.5"	2	1,1250	45	90	50,62	1,190				
BASE 22,5x90* cm - OUT	[M-760] m ²	8.8"x35.4"	6	1,2150	60	360	72,90	1,365				
BASE 75x75 ^R cm - IN	[M-768] m ²	29.5"x29.5"	2	1,1250	45	90	50,62	1,190				
BASE 20x120 ^R cm - IN	[M-761] m ²	7.9"x47.2"	5	1,2000	36	180	43,20	1,082				
PELDAÑO RECTO 31,6x33 cm	[M-707] pz	12.4"x12.9"	6	-	66	396	-	980				
PELDAÑO FLORENTINO 31,6x33 cm	[M-382] pz	12.4"x12.9"	6	-	66	396	-	1,033				
PELDAÑO RECTO 33x33 cm	[M-776] pz	12.9"x12.9"	6	-	66	396	-	1042				
PELDAÑO FLORENTINO 33x33 cm	[M-777] pz	12.9"x12.9"	6	-	66	396	-	1,099				
PELDAÑO ANG. RECTO 33x33 cm	[M-715] pz	12.9"x12.9"	1	-	116	116	-	359				
PELDAÑO ANG. FLORENTINO 33x33 cm	[M-714] pz	12.9"x12.9"	1	-	116	116	-	354				
PELDAÑO RECTO 120x33 cm	[M-739] pz	12.9"x47.2"	2	-	32	64	-	772				
PELDAÑO FLORENTINO 120x33 cm	[M-742] pz	12.9"x47.2"	2	-	32	64	-	721				
PELDAÑO COMPLETO 120x33 cm	[M-419] pz	47.2"x12.9"	7	-	12	84	-	1346				
ZANQUÍN RECTO 9x30cm (D/I)	[M-706] 2 pz	3.5"x11.8"	11	-	99	1089 set	-	1078				
ZANQUÍN RECTO 9x45cm (D/I)	[M-743] 2 pz	3.5"x17.7"	8	-	99	792 set	-	1356				
ZANQUÍN FLORENTINO 9x45cm (D/I)	[M-751] 2 pz	3.5"x17.7"	8	-	99	792 set	-	1350				
ZANQUÍN COMPLETO 9x45cm (D/I)	[M-750] 2 pz	3.5"x17.7"	8	-	99	792 set	-	1357				
RODAPÍE 9x31,6 cm	[M-180] pz	3.5"x12.4"	22	-	99	2,178	-	1,201				
RODAPÍE 9x45 cm	[M-744] pz	3.5"x17.7"	16	-	99	1,584	-	1,394				
TABICA 13,5x120 cm	[M-390] pz	5.3"x47.2"	4	-	40	160	-	668				
VIERTEAGUAS 18x31,6 cm	[M-702] pz	7.1"x12.4"	10	-	72	720	-	1,048				
VIERTEAGUAS 18x50 cm	[M-392] pz	7.1"x19.6"	6	-	72	432	-	1,015				
VIERTEAGUAS 18x50 CORTE Ref. VIER EE00 18X50 / VIER E100 18X50	[M-735] 2pz	-	-	-	-	-	-	-				
BORDE CRETA - Ref. BPCR 0000 33x50	[M-754] pz	12.9"x19.6"	2	-	60	120	-	816				
BORDE CRETA PACK ESQUINA Ref. BPCR EE00 33x50 / BPCR E100 33x50	[M-755] 2 pz	-	1 set	-	-	-	-	-				
BORDE CURVO CRETA Ref. BPCR RE00 33x_ / BPCR R100 33x_	[M-756] pz	-	/radio	-	-	-	-	-				
BORDE MIKONOS Ref. BPMI 0000 E2C 45x70	[M-517] pz	17.7"x27.5"	2	-	22	44	-	682				
PACK ESQUINA BORDE MIKONOS Refs. BPMI EE00 E2C 45x70 / BPMI E100 E2C 45x70	[M-567] 2 pz	-	1 set	-	-	-	-	-				
BORDE MIKONOS AGUJERO SKIMMER Ref. BPMI 5K00 E2C 45x70	[M-530] pz	17.7"x27.5"	-	-	-	-	-	-				
BORDE MIKONOS CURVO Ref. BPMI RE00 E2C 45X_ / BPMI R100 E2C 45X_	[M-737] pz	-	/radio	-	-	-	-	-				
BORDE MAUI - Ref. BPMA 0000 33x50	[M-746] pz	12.9"x19.6"	2	-	60	120	-	813				
BORDE MAUI PACK ESQUINA Ref. BPMA EE00 33x50 / BPMA E100 33x50	[M-748] 2 pz	-	1 set	-	-	-	-	-				
BORDE CURVO MAUI Ref. BPMA RE00 33x_ / BPMAR100 33x_	[M-775] pz	-	/radio	-	-	-	-	-				



CRETA

MIKONOS

MAUI

SNOW-WARM-SMOKE
ARCTIC-NORDIC
MUSGO - BLANCO
CARAMEL

CEMENTS



SNOW



WARM



SMOKE



WOODS



ARCTIC



NORDIC



OLIVO



STROMBOLI



LIGHT



CREAM



SILVER



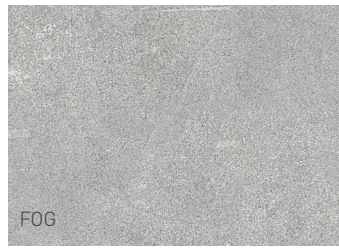
DOMUS



RICE



WHEAT



FOG

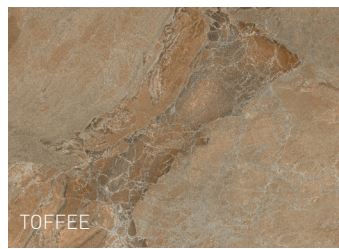
SEA ROCK



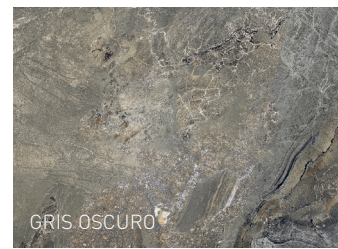
MARFIL



CAMEL



TOFFEE



GRIS OSCURO

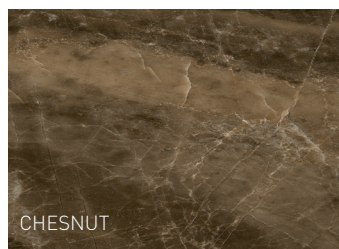
MARBLES



OYSTER



ALMOND



CHESNUT



DOVE

MATERIA



BIANCO



ARENA



PLOMO



Colonial
COTTO

RAINFORREST



BLANCO



MUSGO

in&out
floor tiles

pool
solutions

Edition MARCH'18